

# Watermelon man etude with fragment concept

For Eb instrument

## 1st chorus

D7

Musical staff 1 of the 1st chorus, starting with a D7 chord. The melody features eighth-note patterns and triplet markings.

G7

D7

Musical staff 2 of the 1st chorus, featuring G7 and D7 chords. The melody continues with eighth-note patterns and triplet markings.

A7

G7

A7

G7

Musical staff 3 of the 1st chorus, featuring A7, G7, and A7 chords. The melody includes eighth-note patterns and triplet markings.

A7

G7

D7

A7

Musical staff 4 of the 1st chorus, featuring A7, G7, D7, and A7 chords. The melody concludes with eighth-note patterns and triplet markings.

## 2nd chorus

D7

Musical staff 1 of the 2nd chorus, starting with a D7 chord. The melody features eighth-note patterns and a trill.

G7

D7

Musical staff 2 of the 2nd chorus, featuring G7 and D7 chords. The melody continues with eighth-note patterns.

A7

G

Musical staff 3 of the 2nd chorus, featuring A7 and G chords. The melody includes eighth-note patterns.

A7

G7

Musical staff 4 of the 2nd chorus, featuring A7 and G7 chords. The melody concludes with eighth-note patterns.

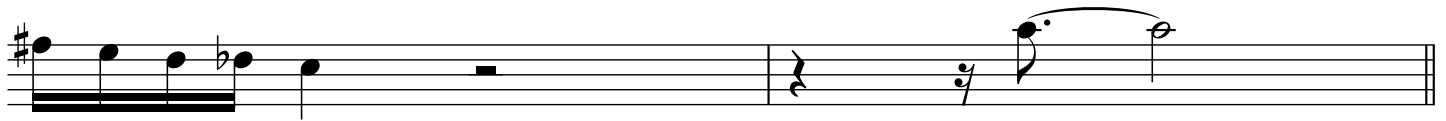
A7

G7



D7

A7



**3rd chorus**

D7

C7



Bb7

Ab7



G7



D7

C7

Bb7



A7

Ab7

G7

Ab7



A7

Ab7

G7

Ab7



A7

Ab7

G7

D7

A7

